



The Shevington Federation

Year 5: Museum of Long-Term Knowledge

MEZZANINE

The Music Lounge (*Music*)

- Ukulele 1
- Ukulele 2
- Two-Part Singing

The Gallery (*Art*)

- Typography and Maps
- Fashion Design
- 3D Architecture

THE LOBBY

The Gift Shop (*Trips & Enrichment*)

- Jodrell Bank
- Beeston Castle/Local Visit (St Ann's)
- London Residential
- Local Field Work

GROUND LEVEL

The Reflection Room (*RE*)

- Christianity / Islam
- Hindu Dharma / Christianity
- Christianity / Judaism

The Room of Wellbeing (*PSHCE*)

- Families and Relationships/Health and Wellbeing
- Citizenship
- Economic Wellbeing/Safety and the Changing Body

OUTSIDE

The Garden (*Outdoor Opportunities*)

- Local Fieldwork activities throughout the year

Active Space (*PE*)

- Physical Challenge, Navigation & Teamwork
- Dance, Invasion Games & Gymnastics
- Athletics & Netwall Games



LEVEL 3

Around the World (*Geography*)

- South America (Locational Knowledge)/Biomes
- Regions of the UK and European Cities
- Local Fieldwork

Artefact Collections (*History*)

- The Maya Civilisation
- Anglo-Saxons and Viking Britain
- Medieval Monarchs

Significant People (*Past & Present*)

- Louise Fili/David Attenborough
- Holocaust Focus/Alfred the Great
- Zaha Hadid

LEVEL 2

Global Connections (*MFL - Spanish*)

- Universe
- Food
- Around the Town

The Library (*Class Readers*)

- Nowhere Emporium/See You In The Cosmos
- Varjak Paw/Boy 87
- No Ballet Shoes in Syria/The Queen's Token

Philosophical Exhibit (*Extended Writing*)

- Does exploration and discovery always benefit humanity?
- How does the past influence modern society?
- What defines your culture?

LEVEL 1

The Research Lab (*Science*)

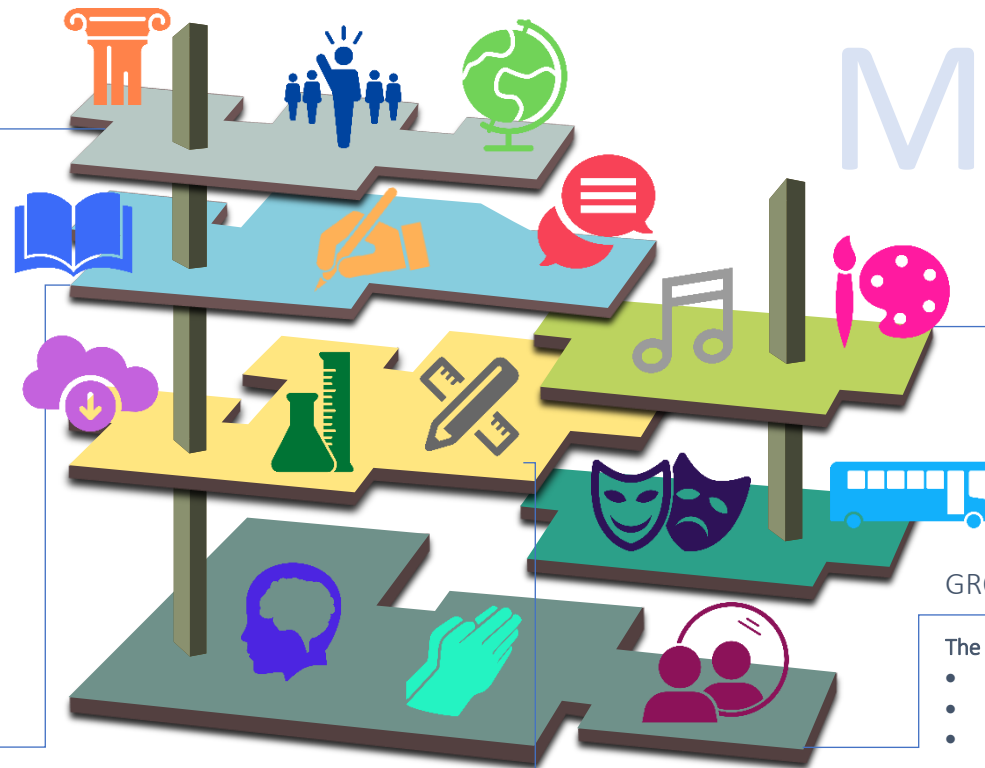
- Earth and Space/ Forces
- Properties of Materials
- Living Things and Their Habitats/Animals Including Humans

Meet the Maker (*DT*)

- Mechanical Systems
- Healthy Food
- Structures - Bridges

Technology Expo (*Computing*)

- Programming A
- Creating Media – Video Production and Vector Graphics
- Programming B/Databases



3

2

1

M

L

G

O