

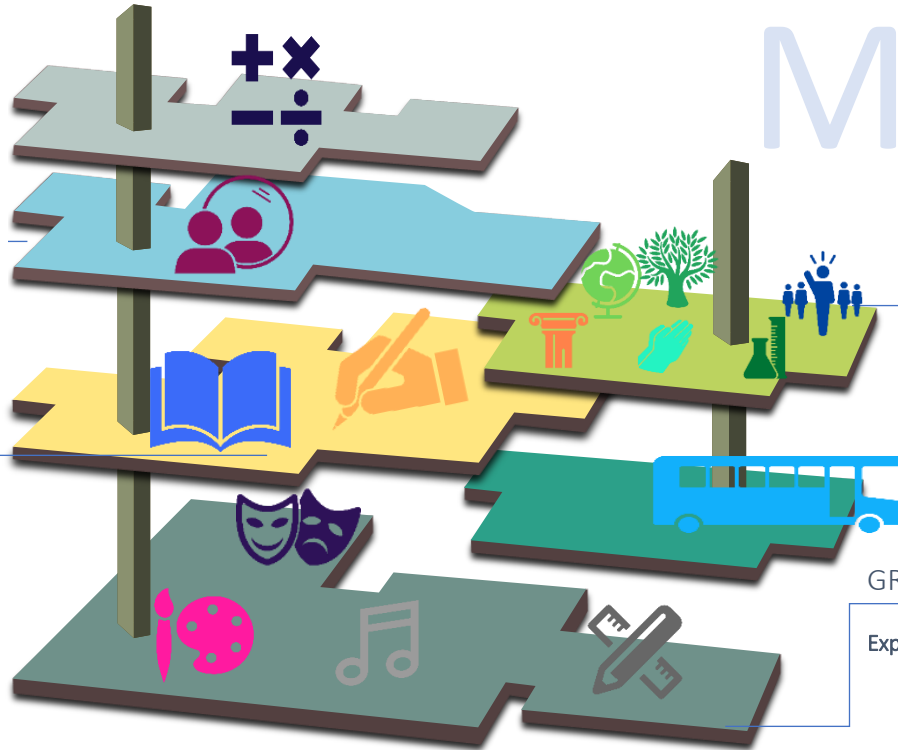


Reception: Museum of Long-Term Knowledge

3

Maths

- Number-comparison, counting, cardinality, composition
- Shape Space and Measure- Spatial awareness, shape, pattern, measure



LEVEL 2

Communication and language

- Recognise and understand the importance of listening
- Engages with class discussion, rhymes and songs
- Expresses feeling, ideas and experiences, using full sentences and a range of tenses

Personal, Social and Emotional Development

- Follow instructions, work towards simple goals and regulate emotions
- Know and understand the three school rules, manage personal needs and show resilience when faced with a challenge
- Forms positive attachments with adults and friends, shows sensitivity and plays cooperatively with others.

MEZZANINE

Understanding the world (*humanities* – past and present, people culture and communities)

- Using Google Earth
- Similarities and differences between the past and present
- Why are some things special (RE)

Understanding the world (*science* –The natural world)

- Seasons
- Observations of animals and plants
- Different environments

THE LOBBY

The Gift Shop (*Trips & Enrichment*)

- Imagine That/ Panto
- Farm
- Travel – Coach to Formby Bus/Train Journey

GROUND LEVEL

Expressive arts and design

- Cooking and nutrition - pumpkin soup
- Textiles - bookmarks
- Structures - boats
- Sing and Sign
- Nursery Rhymes
- Nativity
- Environmental art/ sculpture
- Printing
- Painting

0

OUTSIDE

The Garden (*Outdoor Opportunities*)

Season walks, story walks, exploring local area

Physical Development

Multi-skills
Dance
Gymnastics
Team games



1

LEVEL 1

Literacy

- Demonstrates an understanding of what has been read and understands recently introduced vocabulary
- Read individual letters by saying the sounds, segment and blend simple words, read and write simple sentences including a few common exception words
- Write recognisable letters, most of which are accurately formed