



The Shevington Federation

# Year 5: Museum of Long-Term Knowledge

## MEZZANINE

### The Music Lounge (*Music*)

- Ukulele 1
- Ukulele 2
- Two-Part Singing

### The Gallery (*Art*)

- Typography and Maps
- Fashion Design
- 3D Architecture

## THE LOBBY

### The Gift Shop (*Trips & Enrichment*)

- Jodrell Bank
- Local Visit (St Ann's)
- London Residential
- Local Field Work

## GROUND LEVEL

### The Reflection Room (*RE*)

- Judaism
- Easter Story (Christianity)
- Islam

### The Room of Wellbeing (*PSHCE*)

- Families and Relationships/Health and Wellbeing
- Citizenship
- Economic Wellbeing/Safety and the Changing Body

## OUTSIDE

### The Garden (*Outdoor Opportunities*)

- Local Fieldwork activities throughout the year

### Active Space (*PE*)

- Physical Challenge, Navigation & Teamwork
- Dance, Invasion Games & Gymnastics
- Athletics & Netwall Games



## LEVEL 3

### Around the World (*Geography*)

- South America (Locational Knowledge)/Biomes
- Regions of the UK and European Cities
- Local Fieldwork

### Artefact Collections (*History*)

- The Maya Civilisation
- Anglo-Saxons and Viking Britain
- Medieval Monarchs

### Significant People (*Past & Present*)

- Louise Fili/David Attenborough
- Holocaust Focus/Alfred the Great
- Zaha Hadid

## LEVEL 2

### Global Connections (*MFL - Spanish*)

- Universe
- Food
- Around the Town

### The Library (*Class Readers*)

- See You In The Cosmos/The Explorer
- Viking Boy
- Nowhere Emporium

### Philosophical Exhibit (*Extended Writing*)

- Does exploration and discovery always benefit humanity?
- How does the past influence modern society?
- What defines your culture?

## LEVEL 1

### The Research Lab (*Science*)

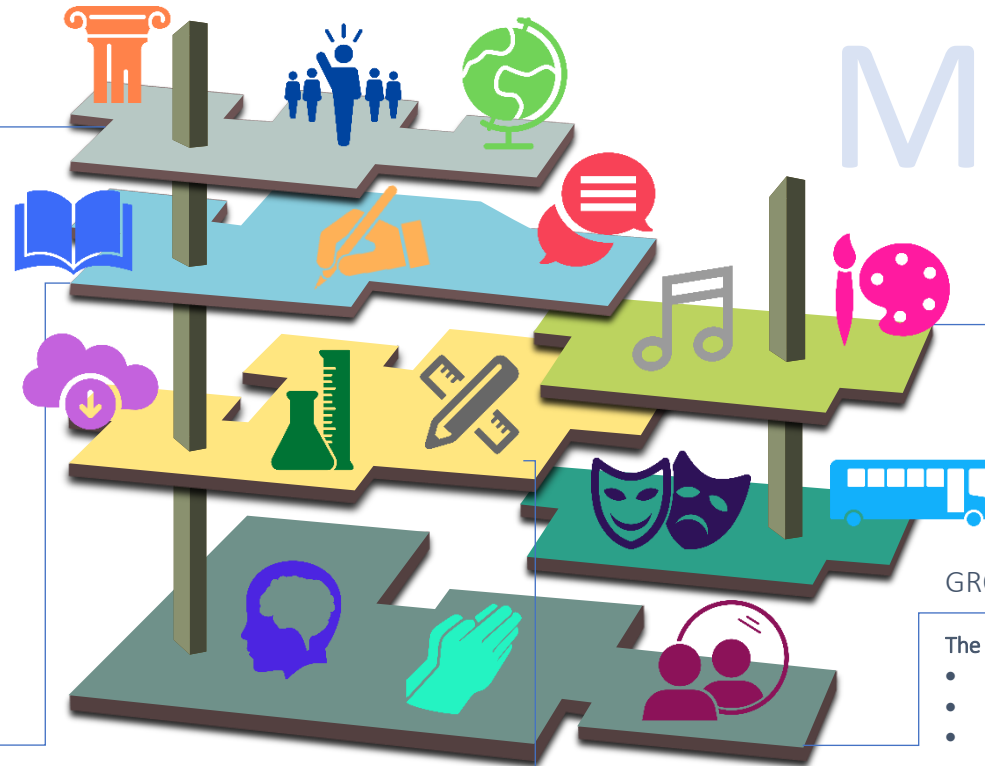
- Earth and Space/ Forces
- Properties of Materials
- Living Things and Their Habitats/Animals Including Humans

### Meet the Maker (*DT*)

- Mechanical Systems
- Healthy Food
- Structures - Bridges

### Technology Expo (*Computing*)

- Programming A
- Creating Media – Video Production and Vector Graphics
- Programming B/Databases



# 3

# 2

# 1

# M

# L

# G

# O